

Field Log

2016 Field Care

| | | | |
|------|-------------------------------------|-------|--|
| 1-8 | East end mowed – WE | 7-18 | Runway mowed – JC |
| 1-11 | Pits & Parking sprayed - JC | | West end watered – DF |
| 1-27 | East end mowed - JC | 7-25 | Runway mowed – WE & JC |
| | Road resurfaced – AB | | West end watered – JL |
| 2-9 | East end mowed – WE & DH | 7-29 | NW, SW & SE fields mowed – JC |
| 2-10 | Road resurfaced – AB | 8-1 | West end & SE watered – JC |
| 3-18 | East end mowed – WE & JC | | Runway mowed – JC |
| 3-29 | Runway mowed – WE | 8-4 | East end watered – DC |
| 3-31 | All mowed and rolled - WE | 8-5 | Runway mowed – JC & KH |
| 4-5 | Runway mowed & rolled – DH&JC | 8-8 | West end watered – JL |
| 4-6 | Bug & weed sprayed - JC | 8-11 | East end watered – DC |
| 4-11 | All mowed – DG & JC | | 8-12 Runway mowed – JC, DG |
| 4-12 | Sprayed safety line and center line | 8-15 | West end watered – DF |
| 4-18 | Runway mowed JC & DH | 8-16 | Geotex laid – RD, DS, DC, DM, WW, WE, JC |
| 4-19 | North and South swamps mowed JC | 8-18 | East end watered – DC |
| 4-22 | Runway rolled – JC | 8-19 | Runway mowed – JC |
| 4-25 | Runway mowed & rolled – JC | 8-22 | West end watered – JL |
| 5-2 | All mowed – WW, DG & JC | 8-25 | East end watered – DC |
| 5-6 | All mowed – PW & OW | 8-29 | Runway mowed – JC |
| 5-7 | Runway Sanded and rolled | 8-30 | West end watered – WE |
| 5-9 | Runway mowed | 8-31 | Fields mowed – JC |
| 5-16 | All mowed, runway aeriated – JC | | Sevin Lawn Insect Granules |
| 5-18 | Fertilized runway | 9-5 | West end watered – DF |
| 5-23 | West end watered – DF | 9-6 | Runway rolled – JC |
| 5-24 | All mowed – WE & JC | 9-7 | All mowed – JC |
| 5-26 | East end watered – JL | 9-12 | East end watered – JL |
| 5-30 | West end watered – DF | 9-15 | West end watered – BW |
| 6-1 | Runway mowed – JC | 9-18 | Runway mowed – JC |
| 6-2 | East end watered – JC | 9-19 | Fertilized – JC |
| 6-3 | Runway mowed – RD & JC | 9-21 | Aeriated - JC |
| 6-6 | West end watered – JL | 9-22 | East end watered – DC |
| 6-7 | Runway mowed – RW & JC | 9-24 | Sanded runway |
| 6-9 | East end watered – DC | 9-26 | West end watered – JL |
| 6-13 | West end watered – BW | 9-28 | Runway mowed – JC |
| 6-15 | Runway & North Loop mowed – JC | 10-6 | Runway mowed – JC |
| 6-16 | East end watered – JC | 10-11 | All mowed – JC |
| 6-17 | Runway mowed – WE & JC | 10-12 | Grass Seed around Geotex |
| 6-20 | West end watered – DF | 10-19 | Runway mowed – JC |
| 6-21 | Runway mowed – JC | 10-25 | Runway mowed – DH & JC |
| 6-23 | East end watered – BW | 11-04 | Runway mowed – DM & JC |
| 6-24 | Runway mowed – WE | | Sprinklers hung on fence |
| 7-5 | Runway mowed – JC | 11-9 | Runway mowed – DH & JC |
| 7-5 | West end watered – DF | | |
| 7-7 | East end watered – DC | | |
| 7-9 | SW field mowed – JC | | |
| 7-11 | Runway mowed – JC | | |
| | SE field mowed – JC | | |
| | West end watered – JL | | |

2016 Field Improvements

5-6-16 Some field tables stained on top.



Mower shed floor repair



More support wood, then filled with rock and covered with 1/2" chip board.

5-8 Runway sanded



5-12 New tables



5-13 More new tables



6-1 Sprinklers for South East pit area attached to fence.



8-15 Trench for underground sprinklers



9-8 Club house awning repair - East Brace lock seized, replaced with new (both)



Geotex runway

1-21 Grass killed



Starting to dry up



5-7 Sand applied



6-20 French Drain installed at south end of N-S soon to be Geotex runway



7-1 Crushed rock (2 loads) dumped on Geotex runway



8-5 Gravel leveled and crowned



8-11 Geotext arrived



8-15 Edges trenched

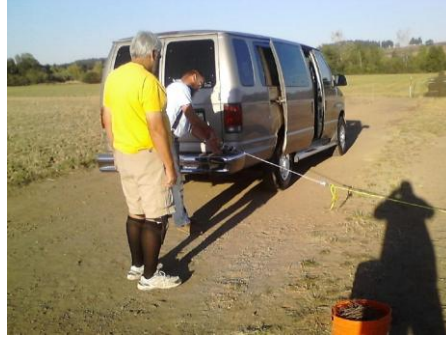
Geotext laid down and stapled



8-19 Did NOT shrink as expected



8-25 Trenched dug out and geotext stretched



8-30 Geotext runway finished, trenches filled and rolled.



Fertilizer applied

07-09-12 05-07-13 07-28-14 09-26-14 05-10-15 05-18-16
 09-19-16

Sand applied

05-17-15 05-07-16 09-19-16

Windsock

Airport Windsock Corporation Product 18"x60" Aviation Quality Windsock
 Flat measurements 28 1/2 " x 58" x 14" 14 brass eyelets

07-16-12 Spare installed
 06-05-15 New one installed



To Do

North South Runway needs a PLAN as to how it will be managed
FIELD FLYING RULES and Designated Flying Area will need to be updated.

Well flow needs increased.

