

Field Log

2017 Field Care

2-12	East end mowed – AW	6-29	East end watered – DF
3-16	Killed grass in pits – JC	6-30	Runway mowed – RD & JC Fertilizer applied
4-1	Runway mowed - ?	7-3	Runway mowed – JC West end watered – DW
4-3	SE, SW mowed – JC	7-6	East end watered – DF
4-5	Road resurfaced – AB DM Runway mowed & rolled – JC Pits & Parking sprayed - JC	7-7	All mowed, Runway rolled – JC
4-28	Road resurfaced – AB DM Runway mowed - JC	7-10	Runway mowed – JC West end watered – JC
5-1	Runway mowed & rolled – JC	7-13	East end watered – DC
5-2	Safety line sprayed - JC Pits & Parking sprayed - JC	7-17	West end watered – DF Runway Mowed – DM
5-?	Runway mowed - ?	7-20	East end watered – JC
5-7	Runway mowed – JC	7-21	All mowed - JC
5-10	Weeds sprayed, Grass seeded - JC	7-24	All mowed - JC West end watered – JL
5-15	All Mowed – WE, JC	7-27	East end watered – DF
5-18	Elk hoof prints filled with dirt	7-28	All mowed - JC
5-19	Runway mowed & rolled – JC	7-31	West end watered – JC
5-22	Runway mowed, Center Line sprayed, Sprinklers cut down from fence, Sprinkler end stops marked - JC	8-3	East end watered – JL
5-23	North and South fields mowed - JC Bleachers scraped - JC	8-4	All mowed – JC
5-24	Bleachers painted – JC Weeds sprayed – JC	8-7	West end watered – DF Runway Mowed – DF, JC
5-26	Runway mowed – DM & JC	8-9	East end watered – BW
5-30	All mowed – JC West end watered – JC	8-10	Runway Mowed – DH, JC
6-2	East end watered – DC (Problem with pump) Runway mowed – JC	8-13	Runway Mowed – JC
6-3	Bad Fuel in pump tank.	8-14	West end watered – DF
6-5	Runway mowed – JC West end watered – JC	8-16	Runway west 2/3 sanded
6-6	Fields Mowed – JC	8-19	Runway and Swamp Plowed
6-12	West end watered – BW	9-1	Watered and rolled
6-14	All mowed – JC Some Mint sprayed with KILLER	9-16	Seeded, raked and rolled
6-15	East end watered – DC	9-25	Watered center of runway 2 hrs
6-19	West end watered – DF	9-27	Watered center of runway 2 hrs
6-22	East end watered – DC	9-28	Watered East end of runway 2 hrs Seeded South East field Watered South East field 1 hr
6-23	Runway mowed – JC	9-30	Watered East end of runway 2 hrs Watered South East field 2 hrs
6-25	All mowed – JC	10-15	Pump and hoses drained
6-26	West end watered – JL	10-17	Runway mowed (first for the new grass)
		10-18	Lime applied on low Ph parts of runway
		10-27	Runway mowed – JC
		11-12	Runway mowed & weeds sprayed– JC
		12-07	Runway mowed

2017 Field Improvements

2-14-17 New weather station installed.



5-2 Safety line sprayed.

5-18 Elk hoof prints filled with dirt

5-22 Center Line sprayed,

5-24 Bleachers painted – JC

6-14 New Fertilizer spreader purchased



July 25 New EAST wind sock

New awning strap installed



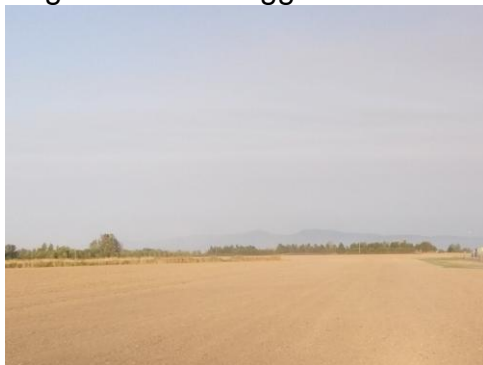
7-27 Safety line sprayed.
Aug 16 – Sand on runway

Aug 19 – Plowed



Aug 26 – Rototilled

Aug 27-28-29 Dragged and rolled



Sep 1 - Watered and rolled

Sep 6 - Swamp dragged and rolled



Sep 16 – Seeded,



raked and rolled.



Sep 24 – raised sprinkler heads 1”



Sep 25 – watered center of runway 2 hrs



Sep 25 – watered East end of runway 2 hrs



Sep 28 – Seeded and watered South East field 1 hr



Oct 15 – Board on west side of mower shed brushed, and painted.



Fertilizer applied

07-09-12 05-07-13 07-28-14 09-26-14 05-10-15 05-18-16
09-19-16 06-30-17

Sand applied

05-17-15 05-07-16 09-19-16 08-16-17

Windsock

Airport Windsock Corporation Product 18"x60" Aviation Quality Windsock
Flat measurements 28 1/2 " x 58" x 14" 14 brass eyelets

07-16-12 Spare installed
06-05-15 New one installed



To Do

Geotex - North South Runway - needs a PLAN as to how it will be managed
FIELD FLYING RULES and Designated Flying Area will need to be updated.